



Kavinci Motors  
54 Lakewood Blvd, Carrum downs  
Victoria, 3201  
Melbourne, Australia

(03) 8595 0922  
support@kavincimotors.com

## Product Issue

The Connector plugged to the Microsquirt ECU requires dielectric grease inside the connector.

This dielectric grease will prevent the access of water inside the pins and prevent rusting.

The rust on the pins can affect the rideability of the ski and the engine, causing loss of power, hard starting on water and backfires.

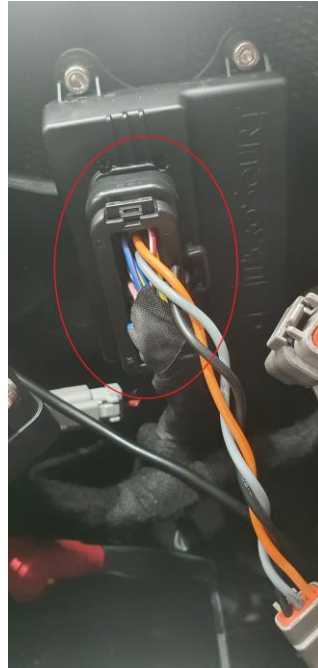
Attached with this document, the instruction to put dielectric grease inside the connector.

If you have any concerns, please contact us. We appreciate your assistance.

**Stephane PAIN**  
Electrical Engineer

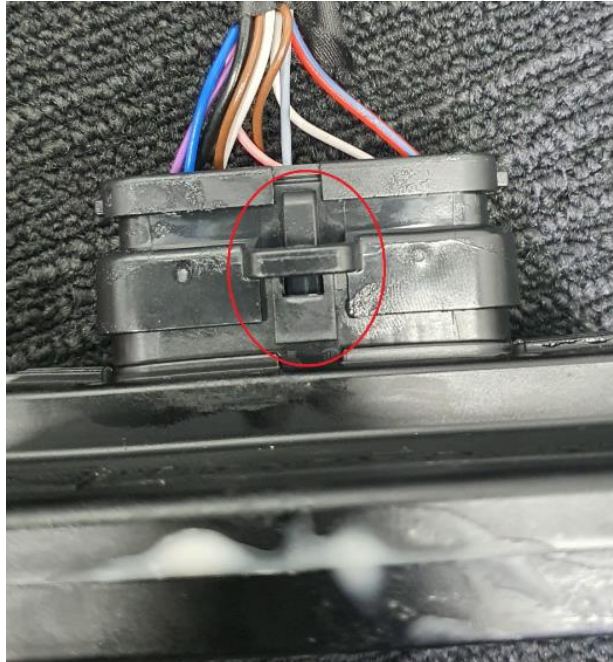
The connector concerned is plugged to the Microsquirt ECU on the 1162cc Dual – Injection 2022.

The ECU is attached to the e-Bar.

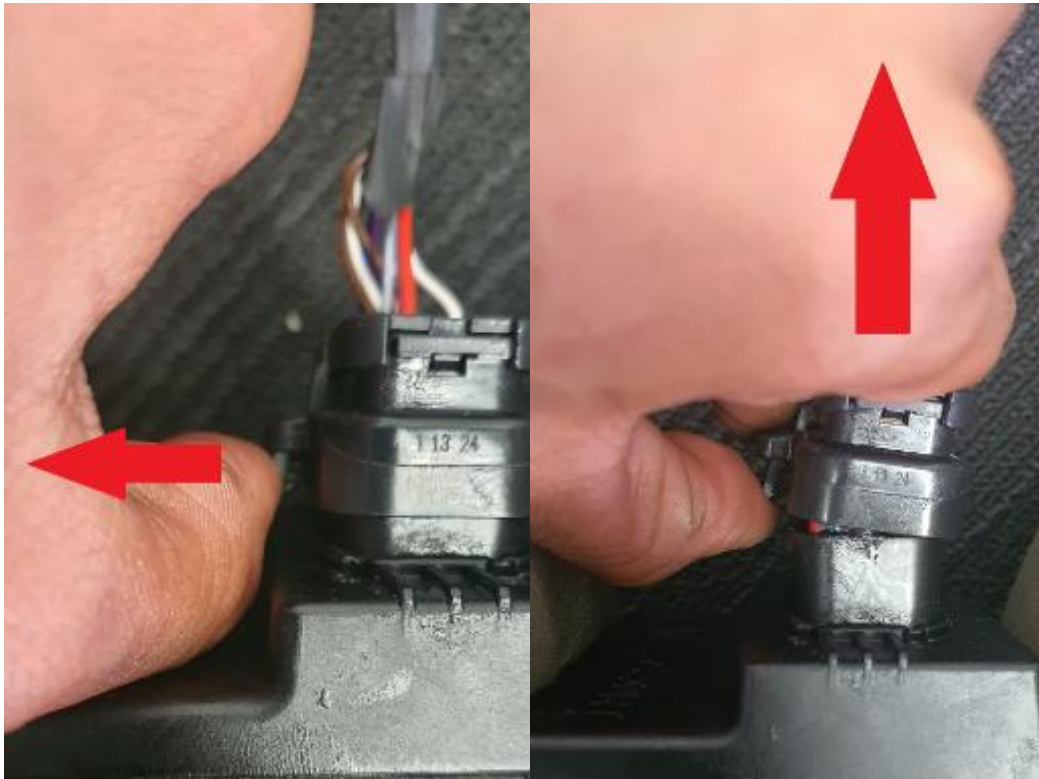


## 1. Remove the connector on the ECU

On the front of the connector, there is a clip holder.

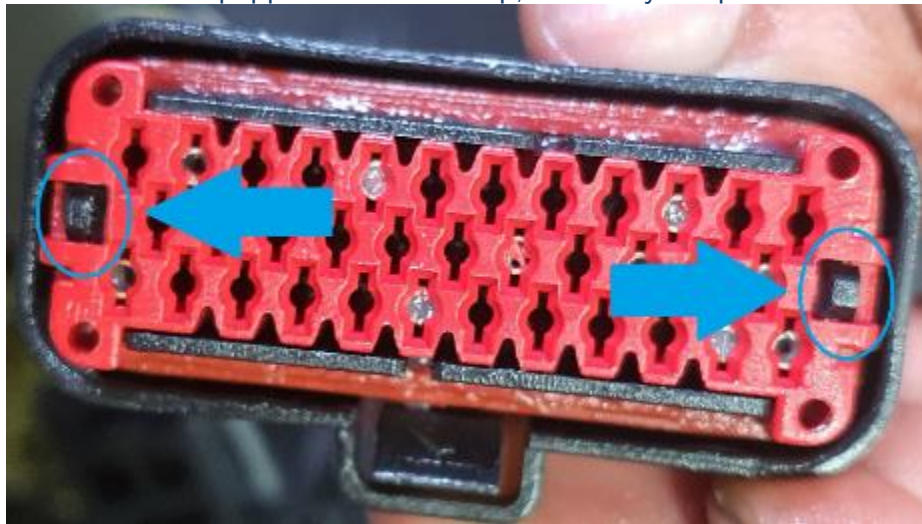


To remove the connector on the ECU, Pull this pin away from the connector and in same time pull the connector up to the ECU.



## 2. Remove the connector cap

The connector is equipped with a red cap, locked by 2 squares in the inside



And a hook on each side

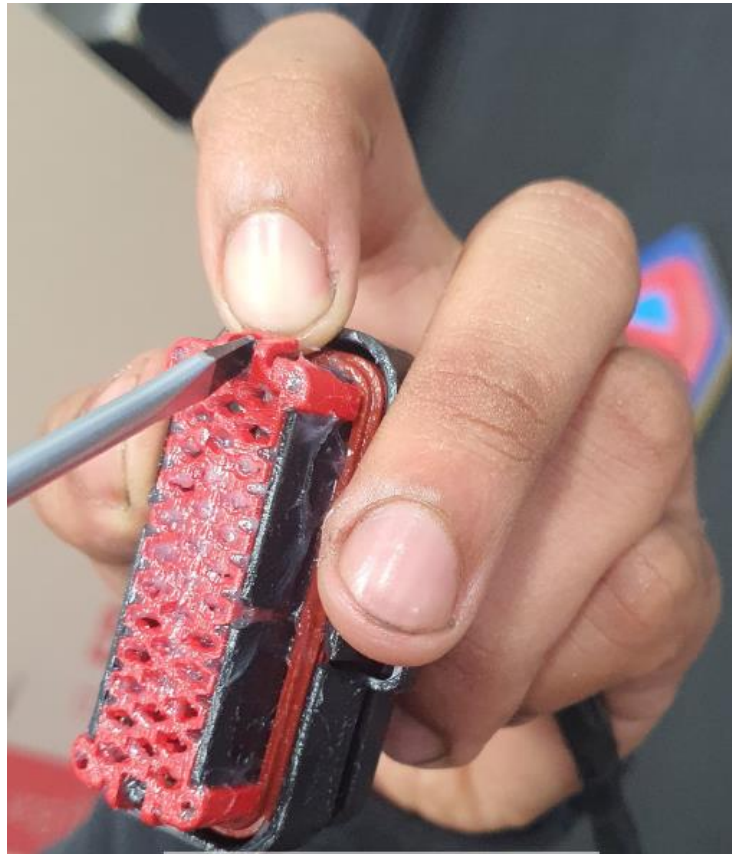


To remove the cap, pull the hook and push it away from the connector

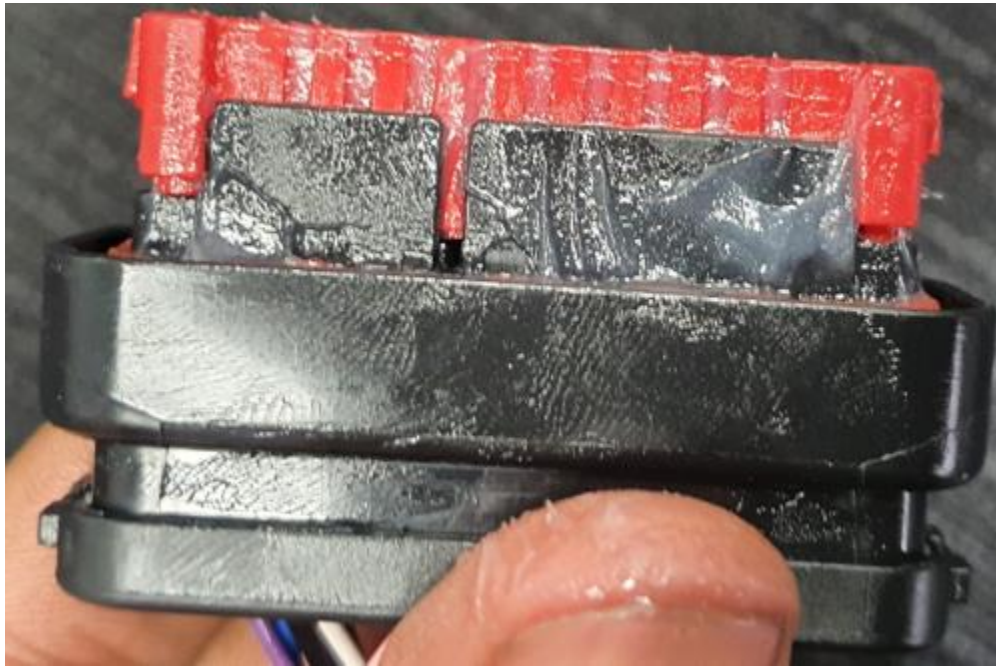


In the same time, with a small flat heat screw driver or tweezers, push the square away from the connector

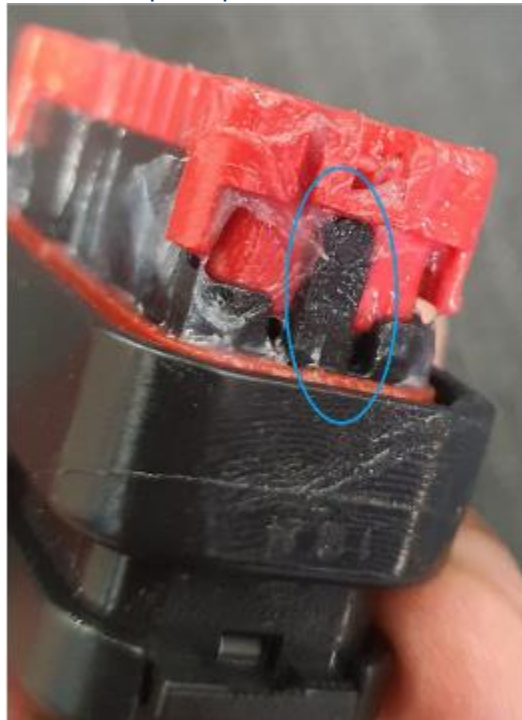




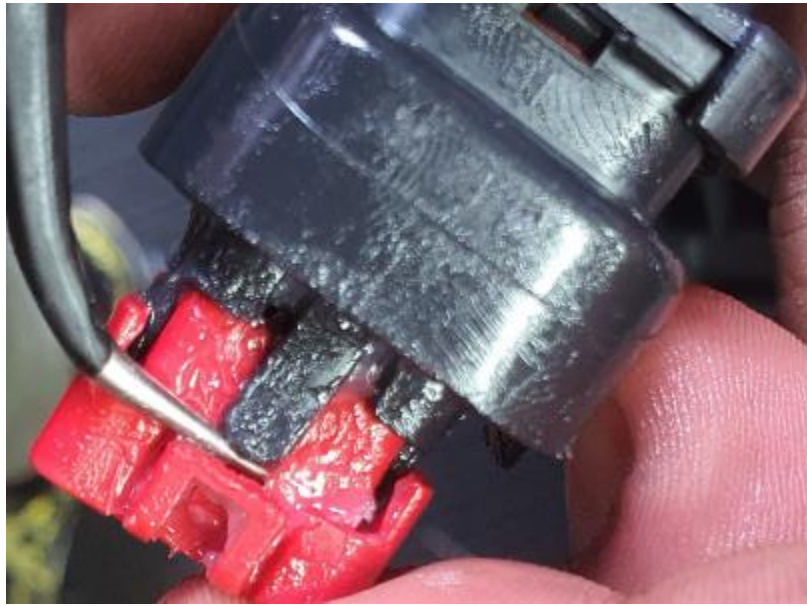
Once done, reproduce on the other side of the connector.



Once the red cap is up, we can see the full locker.

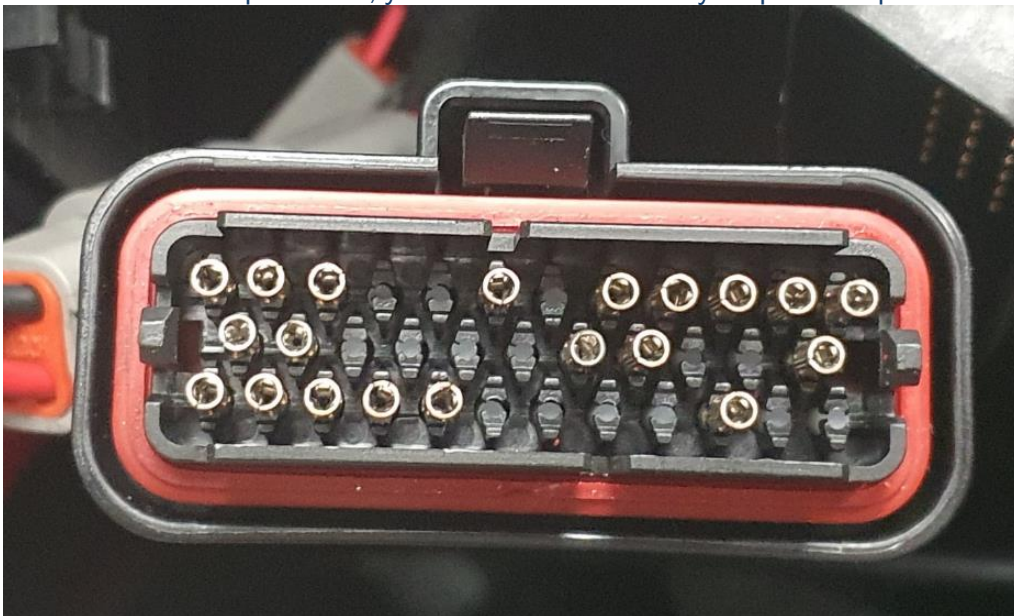


To remove the locker, use a tweezer or a small flat head screw driver to pull away the locker.  
In the same time, push away the cap.



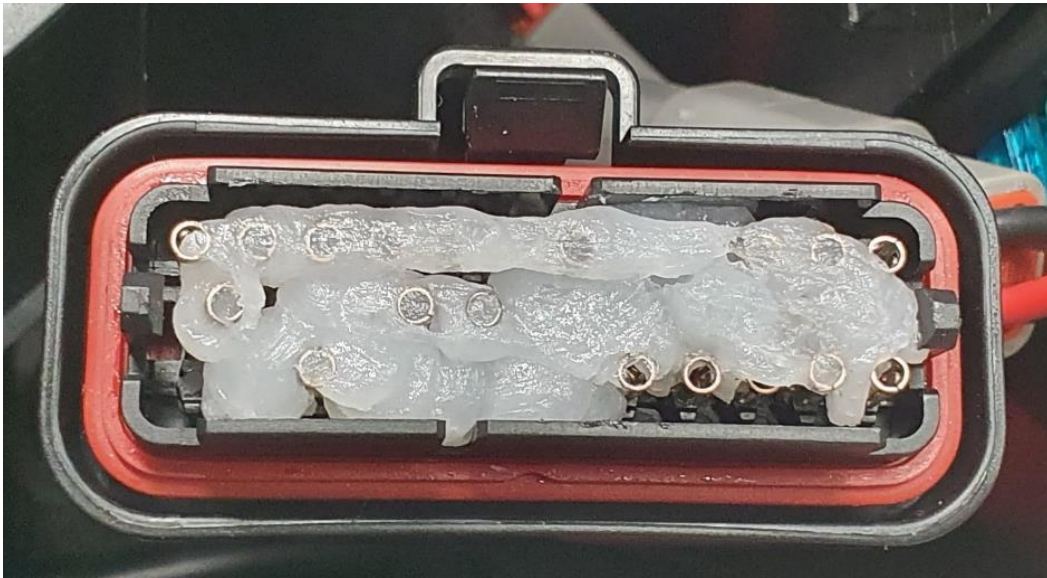
Reproduce on the other side of the connector.

Once the cap remove, you can see and visually inspect the pins.



3. Fill the connector with dielectric Grease





#### 4. Put the connector back

Align all the pin and the holes of the red cap. If the insert feel hard to put it, just gently wiggle the cap to align the pins.



When pressing the cap back, need to feel the locker aligned with the connector and press again to fully close the connector.

Inspect the connector cap, make sure the 2 squares are visible on the connector.



